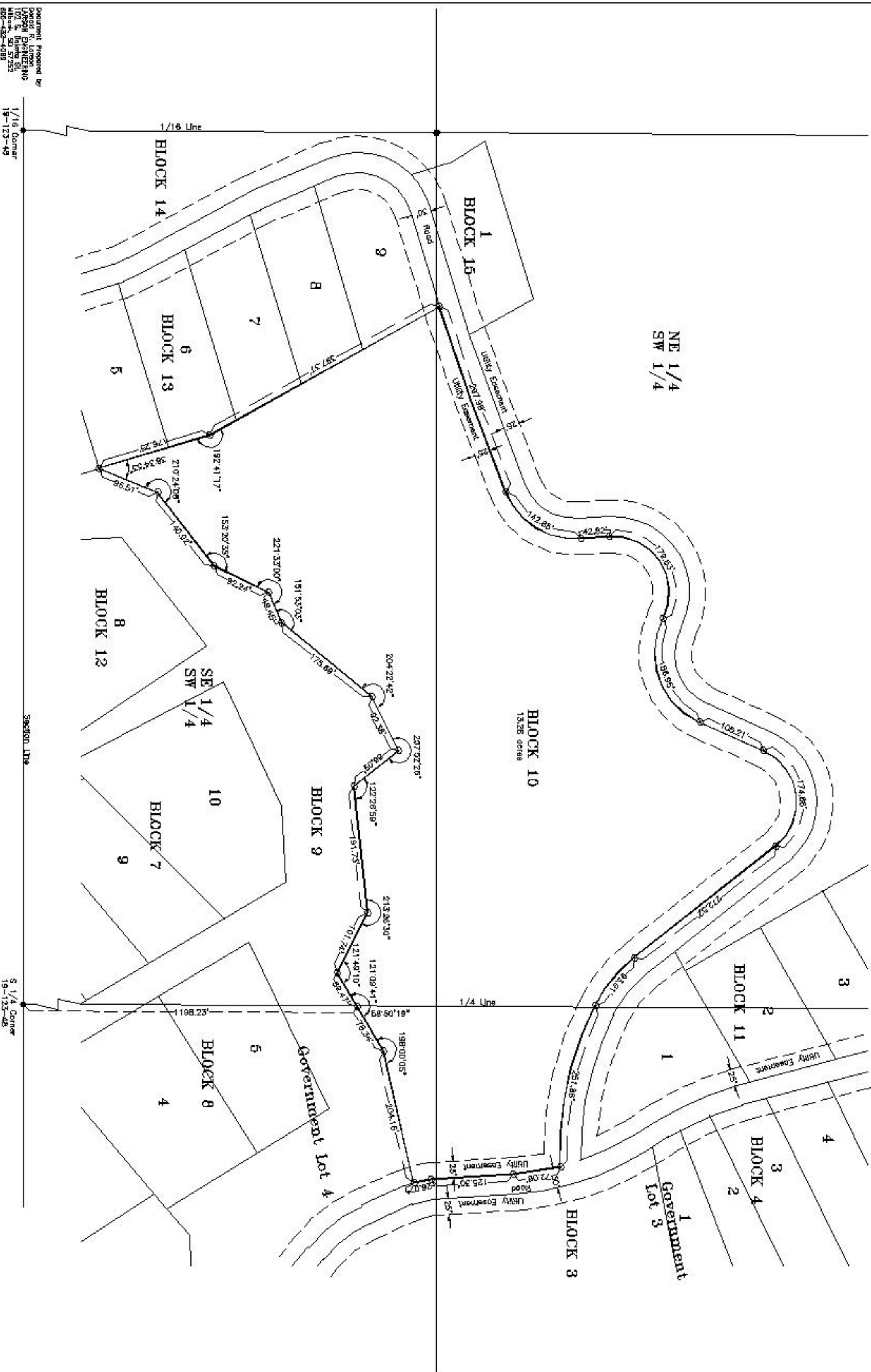


No virus found in this incoming message.

Checked by AVG Anti-Virus.

Version: 7.0.308 / Virus Database: 266.6.2 - Release Date: 3/4/2005

SHEET 6 OF 7  
 BLOCK 10, SHORES OF TIMBER RIDGE SUBDIVISION



Surveyed and Platted by

Donald R. Larson  
 Registered Professional Engineer  
 and Land Surveyor No. 2489  
 March 2005

Document Prepared by  
 LARSON SURVEYING  
 102 S. Duane St.  
 Milbank, SD 57252  
 605-432-4089

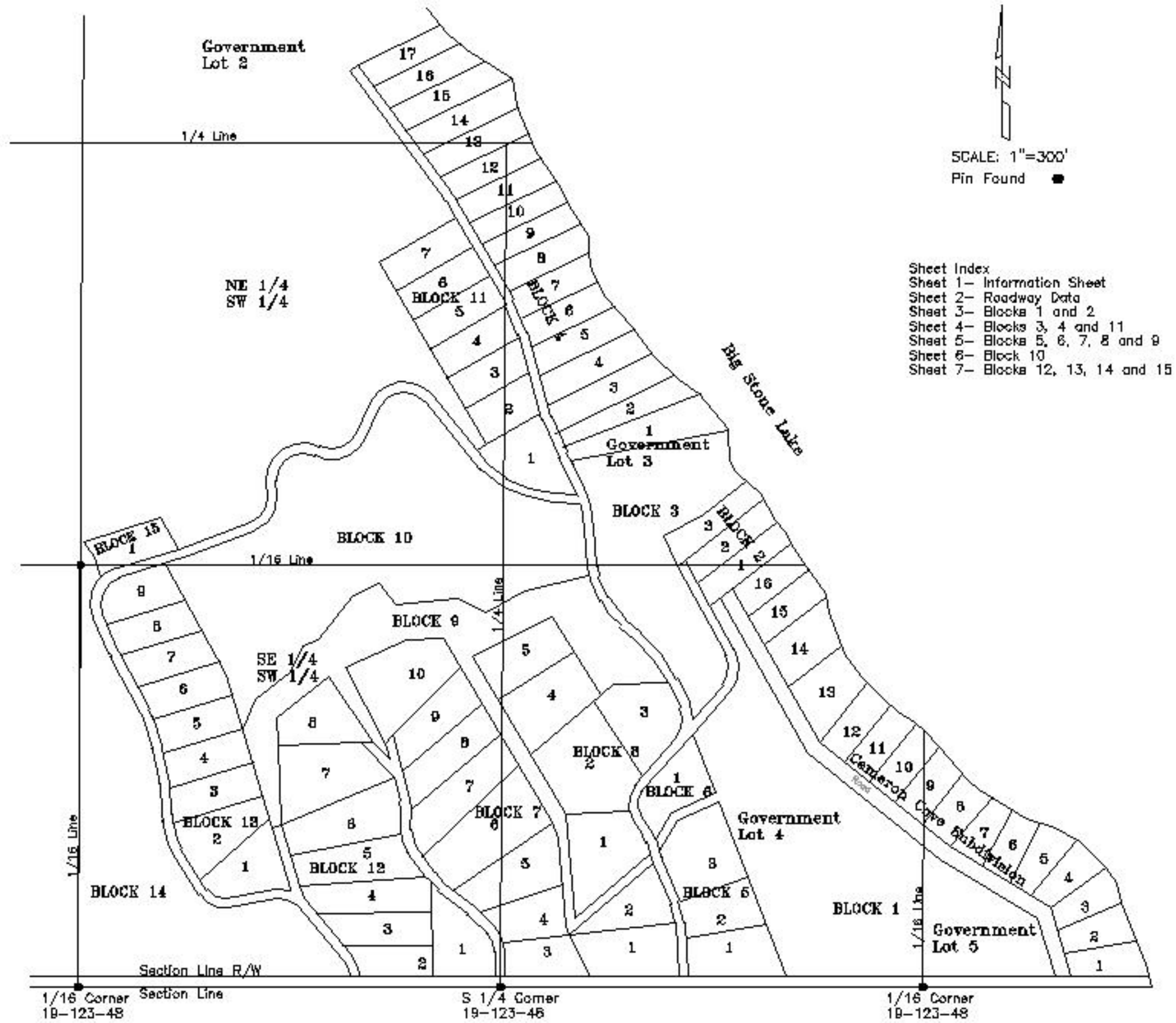
**PLAT OF**

**BLOCK 1; LOTS 1-3, BLOCK 2; BLOCK 3; LOTS 1-17, BLOCK 4;  
 LOTS 1-3, BLOCK 5; LOT 1, BLOCK 6; LOTS 1-10, BLOCK 7;  
 LOTS 1-5, BLOCK 8; BLOCK 9; BLOCK 10; LOTS 1-7, BLOCK 11;  
 LOTS 1-8, BLOCK 12; LOTS 1-9, BLOCK 13; BLOCK 14; and  
 LOT 1, BLOCK 15, SHORES OF TIMBER RIDGE SUBDIVISION,  
 located in the E 1/2 SW 1/4, Government Lot 2,  
 Government Lot 3, Government Lot 4 and Government Lot 5  
 in Section 19, Township 123 North, Range 48 West of the 5th P.M.,  
 Roberts County, South Dakota**

NOTES: Roadways shown are dedicated for public use for access to the lots.

Maintenance of the roadways remains the responsibility of the owners of the lots unless accepted by a government entity.

An easement for utilities is dedicated on the roadways and lots as shown on the plat.



- Sheet Index  
 Sheet 1- Information Sheet  
 Sheet 2- Roadway Data  
 Sheet 3- Blocks 1 and 2  
 Sheet 4- Blocks 3, 4 and 11  
 Sheet 5- Blocks 5, 6, 7, 8 and 9  
 Sheet 6- Block 10  
 Sheet 7- Blocks 12, 13, 14 and 15

This Plat shall vacate Lots 1-6, Block 2 and Lots 1-18, Block 3, the roads and easements of the Plat of LOTS 1-18, BLOCK 1, LOTS 1-8, BLOCK 2, LOTS 1-18, BLOCK 3, SHORES OF TIMBER RIDGE SUBDIVISION, located in the E 1/2 SE 1/4, Government Lot 2, Government Lot 3 and Government Lot 4 in Section 19, Township 123 North, Range 48 West of the 5th P.M., Roberts County, South Dakota Document No. 101988 Filed September 7, 2004 Plat Cabinet 2a R-18 and shall vacate Lots 1-3, Block 1 and Lots 1-17, Block 4, the roads and easements of the Plat of LOTS 1-3, BLOCK 1 and LOTS 1-17, BLOCK 4, SHORES OF TIMBER RIDGE SUBDIVISION, located in the NE 1/4 SW 1/4, Government Lots 2, 3, and 4 in Section 19, Township 123 North, Range 48 West of the 5th P.M., Roberts County, South Dakota Document No. 102691 Filed December 1, 2004 Plat Cabinet 2a R-27

Surveyed and Platted by

Donald R. Larson  
 Registered Professional Engineer  
 and Land Surveyor No. 2498  
 March 2005

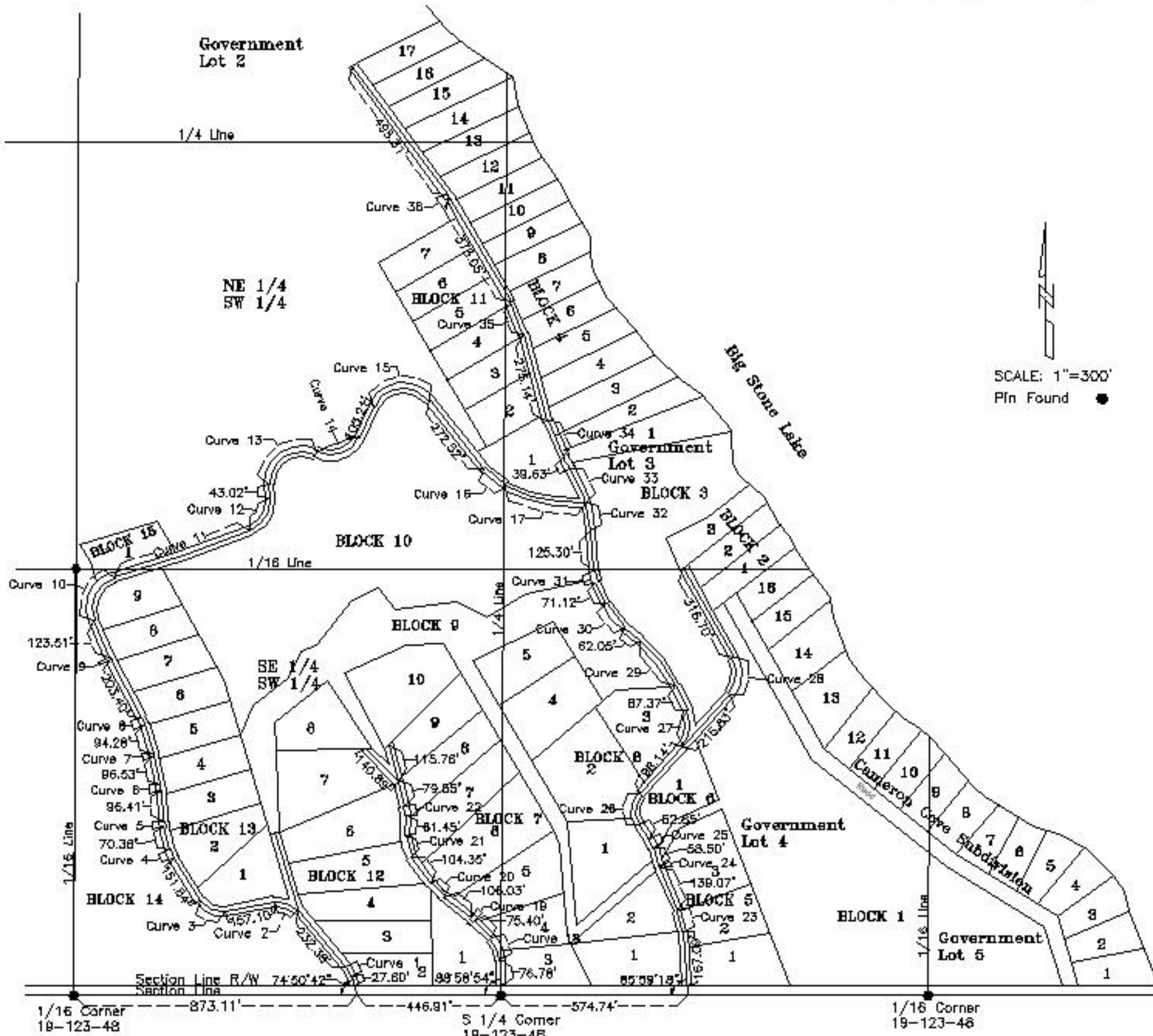
Document Prepared by  
 Donald R. Larson  
 LARSON ENGINEERING  
 102 S. Dakota St.  
 Milbank, SD 57252  
 605-432-4069

Document # \_\_\_\_\_  
 STATE OF SOUTH DAKOTA COUNTY OF ROBERTS--ss  
 Recorded this \_\_\_\_\_ day of \_\_\_\_\_ 20\_\_\_\_  
 at \_\_\_\_\_ M Plat Case \_\_\_\_\_ Plat No. \_\_\_\_\_  
 Registrar of Deeds

SHEET 2 OF 7  
ROADWAYS FOR SHORES OF TIMBER RIDGE SUBDIVISION

NOTES: Roadways shown are dedicated for public use for access to the lots.

Maintenance of the roadways remains the responsibility of the owners of the lots unless accepted by a government entity.



NOTES: All curve data is for road centerline

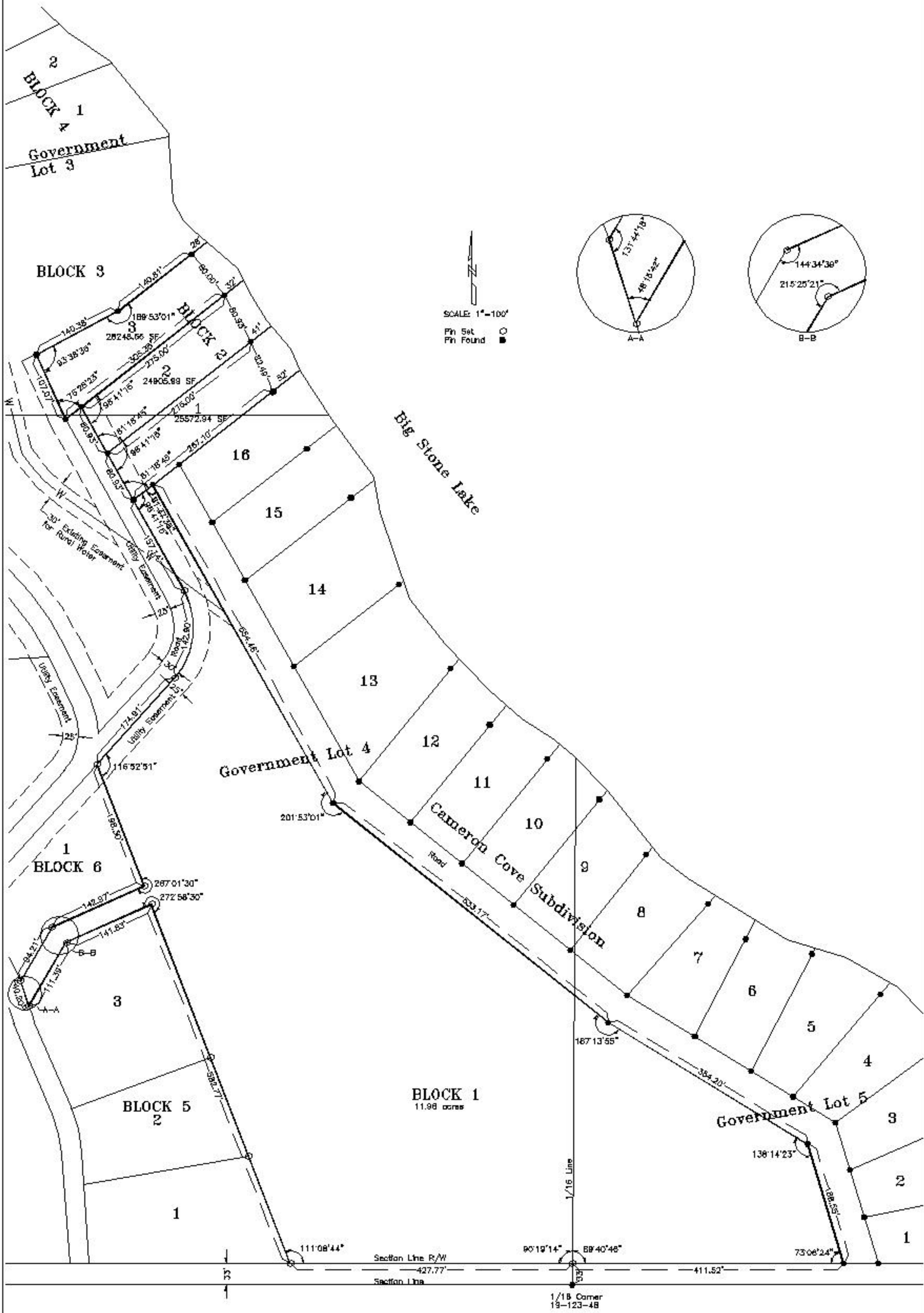
Curve 1 Data R=74.75' D=76'39"00" Δ=24'58'49" L=32.59' T=16.56' C=32.33'	Curve 2 Data R=75.22' D=76'10"15" Δ=62'00'38" L=81.41' T=45.21' C=77.48'	Curve 3 Data R=73.02' D=78'27'50" Δ=69'37'50" L=86.74' T=50.78' C=83.38'	Curve 4 Data R=100.00' D=57'17'45" Δ=19'09'35" L=33.44' T=16.88' C=33.28'	Curve 5 Data R=100.00' D=57'17'45" Δ=9'59'12" L=17.43' T=8.74' C=17.41'	Curve 6 Data R=100.00' D=57'17'45" Δ=9'10'02" L=16.00' T=8.02' C=15.98'	Curve 7 Data R=100.00' D=57'17'45" Δ=56'41'41" L=21.37' T=11.03' C=21.83'	Curve 8 Data R=101.08' D=56'41'41" Δ=6'05'16" L=7.92' T=3.96' C=7.81'	Curve 9 Data R=74.54' D=76'51'57" Δ=8'18'40" L=168.84' T=113.65' C=150.15'	Curve 10 Data R=100.00' D=57'17'45" Δ=57'18'40" L=168.84' T=113.65' C=150.15'
Curve 11 Data R=4321.03' D=1'19'34" Δ=5'53'08" L=443.87' T=222.13' C=443.68'	Curve 12 Data R=96.08' D=59'38'00" Δ=73'41'20" L=123.57' T=71.89' C=115.23'	Curve 13 Data R=100.00' D=57'17'45" Δ=121'01'13" L=211.22' T=176.82' C=174.09'	Curve 14 Data R=100.00' D=57'17'45" Δ=93'08'45" L=162.57' T=105.65' C=145.25'	Curve 15 Data R=100.00' D=57'17'45" Δ=117'44'34" L=205.50' T=165.59' C=171.20'	Curve 16 Data R=200.00' D=28'38'52" Δ=25'01'36" L=87.36' T=44.39' C=86.67'	Curve 17 Data R=481.11' D=11'54'33" Δ=30'30'36" L=256.19' T=131.21' C=253.17'	Curve 18 Data R=100.00' D=57'17'45" Δ=44'05'21" L=76.95' T=40.48' C=75.07'	Curve 19 Data R=100.00' D=57'17'45" Δ=7'11'28" L=12.55' T=6.28' C=12.54'	Curve 20 Data R=200.00' D=57'17'45" Δ=15'58'58" L=55.79' T=28.08' C=55.61'
Curve 21 Data R=100.00' D=57'17'45" Δ=39'18'55" L=68.56' T=35.69' C=87.23'	Curve 22 Data R=100.00' D=57'17'45" Δ=17'40'33" L=30.85' T=15.55' C=30.73'	Curve 23 Data R=200.00' D=28'38'52" Δ=18'02'22" L=66.46' T=33.54' C=88.18'	Curve 24 Data R=100.00' D=57'17'45" Δ=5'14'54" L=9.16' T=4.58' C=9.16'	Curve 25 Data R=100.00' D=57'17'45" Δ=18'22'29" L=32.07' T=16.17' C=31.93'	Curve 26 Data R=75.00' D=76'23'40" Δ=78'09'05" L=102.30' T=60.90' C=94.55'	Curve 27 Data R=100.00' D=57'17'45" Δ=67'44'27" L=118.23' T=67.12' C=111.46'	Curve 28 Data R=100.00' D=57'17'45" Δ=71'11'45" L=124.26' T=71.58' C=116.42'	Curve 29 Data R=400.00' D=14'19'26" Δ=25'45'01" L=179.77' T=81.43' C=178.28'	Curve 30 Data R=200.00' D=28'38'52" Δ=27'20'30" L=95.44' T=48.65' C=94.54'
Curve 31 Data R=100.00' D=57'17'45" Δ=20'37'35" L=36.00' T=18.20' C=35.81'	Curve 32 Data R=400.00' D=14'19'26" Δ=12'29'41" L=87.23' T=43.79' C=87.08'	Curve 33 Data R=400.00' D=14'19'26" Δ=16'45'07" L=116.95' T=58.80' C=118.53'	Curve 34 Data R=400.00' D=14'19'26" Δ=18'07'37" L=126.55' T=63.81' C=128.02'	Curve 35 Data R=400.00' D=14'19'26" Δ=15'36'32" L=108.97' T=54.82' C=108.63'	Curve 36 Data R=100.00' D=57'17'45" Δ=6'18'05" L=10.94' T=5.48' C=10.94'				

Surveyed and Platted by

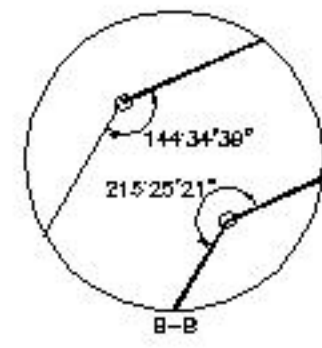
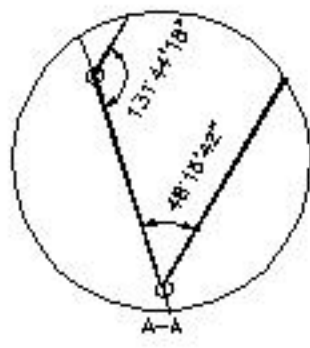
Donald R. Larson  
Registered Professional Engineer  
and Land Surveyor No. 2498

March 2005

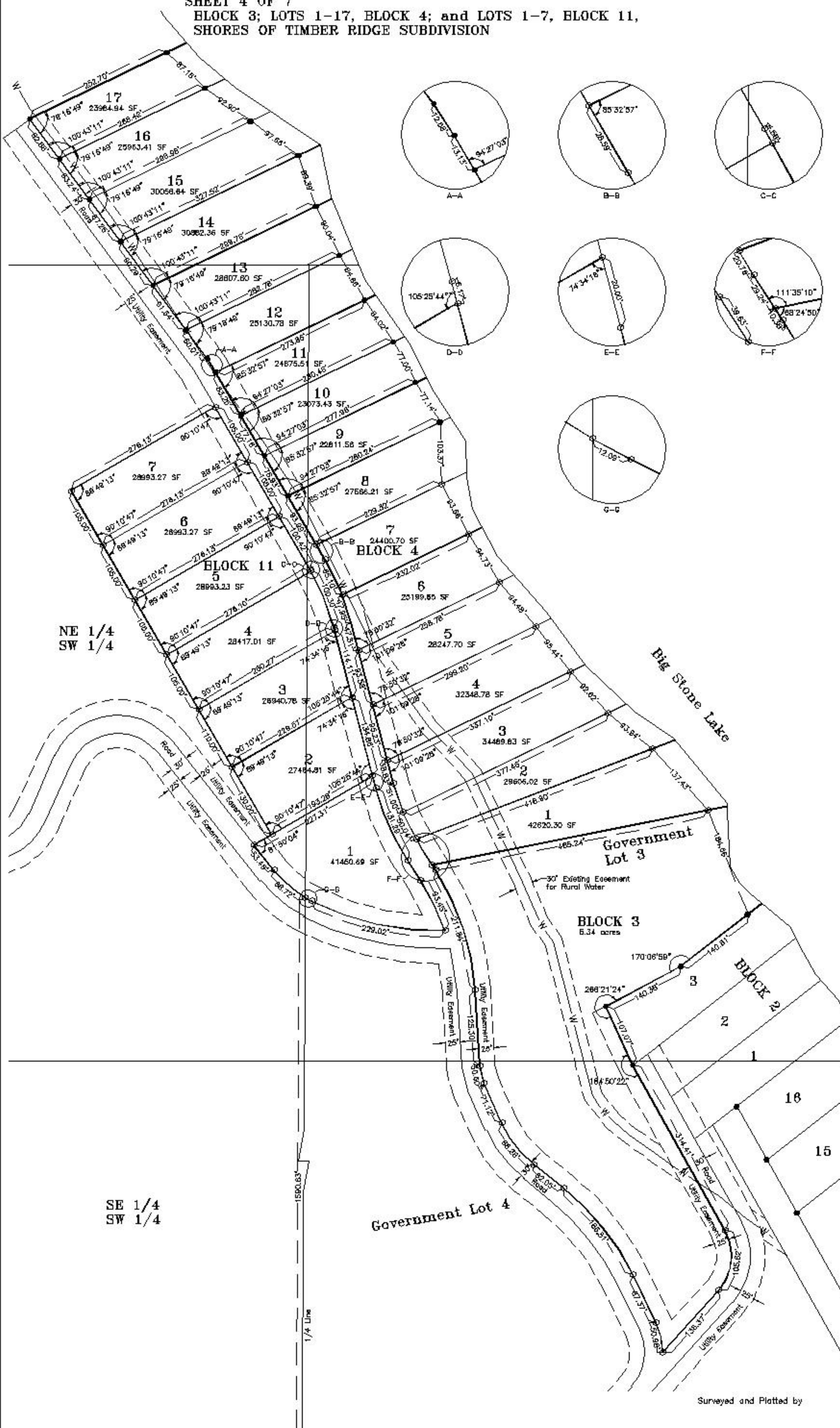
SHEET 3 OF 7  
 BLOCK 1; and LOTS 1-3, BLOCK 2, SHORES OF TIMBER RIDGE SUBDIVISION



SCALE: 1"=100'  
 Pin Set ○  
 Pin Found ■



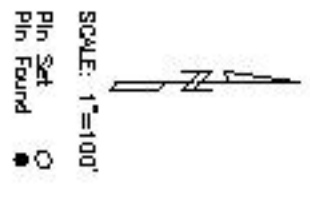
SHEET 4 OF 7  
 BLOCK 3; LOTS 1-17, BLOCK 4; and LOTS 1-7, BLOCK 11,  
 SHORES OF TIMBER RIDGE SUBDIVISION



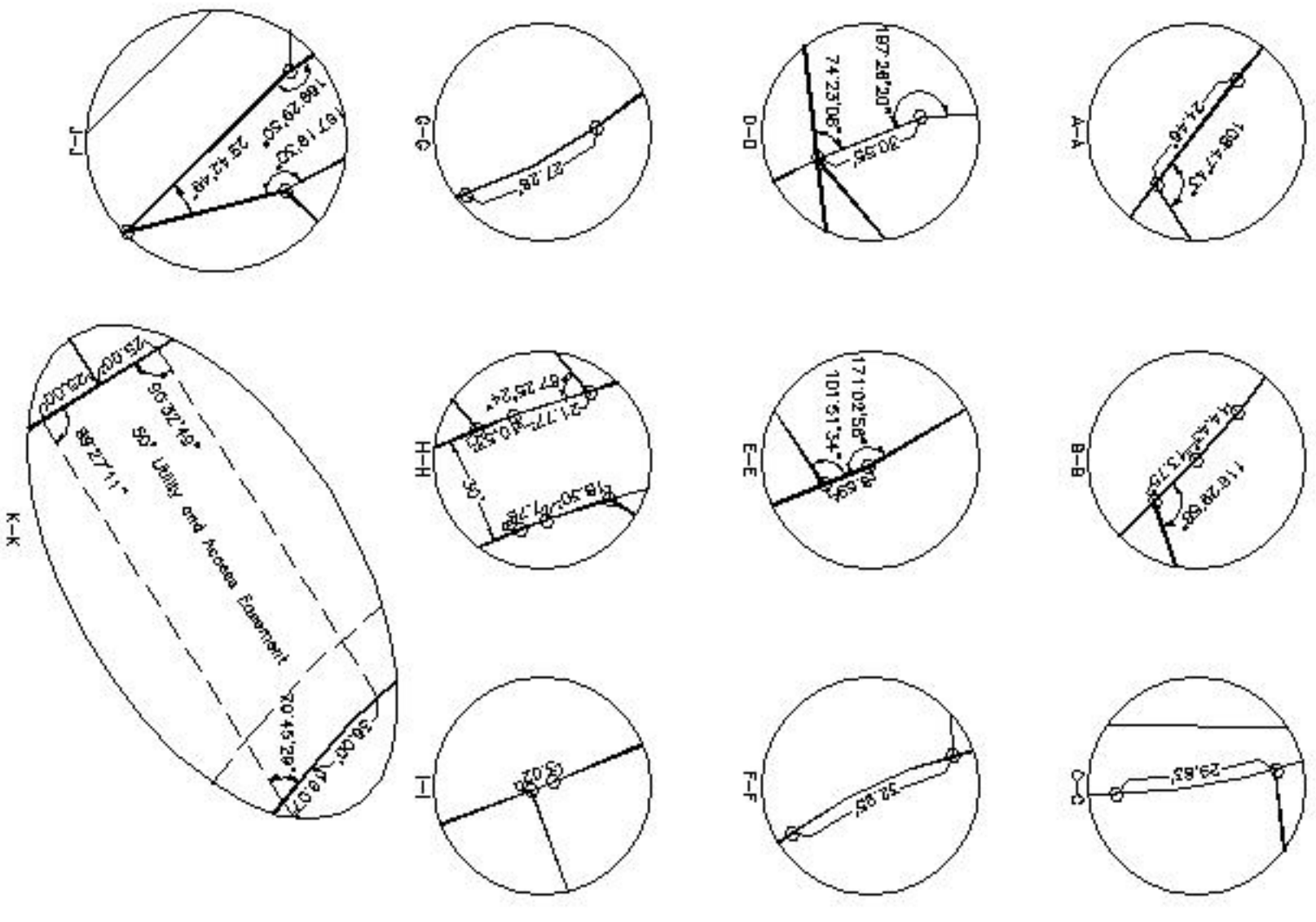
Designed Prepared by  
 Donald R. Larson  
 Licensed Professional Engineer  
 and Land Surveyor No. 2439  
 102 S. Dakota St.  
 Aberdeen, SD 57202  
 605-432-4088



SHEET 5 OF 7  
 LOTS 1-3, BLOCK 5; LOT 1, BLOCK 6; LOTS 1-10, BLOCK 7;  
 LOTS 1-5, BLOCK 8; and BLOCK 9,  
 SHORES OF TIMBER RIDGE SUBDIVISION



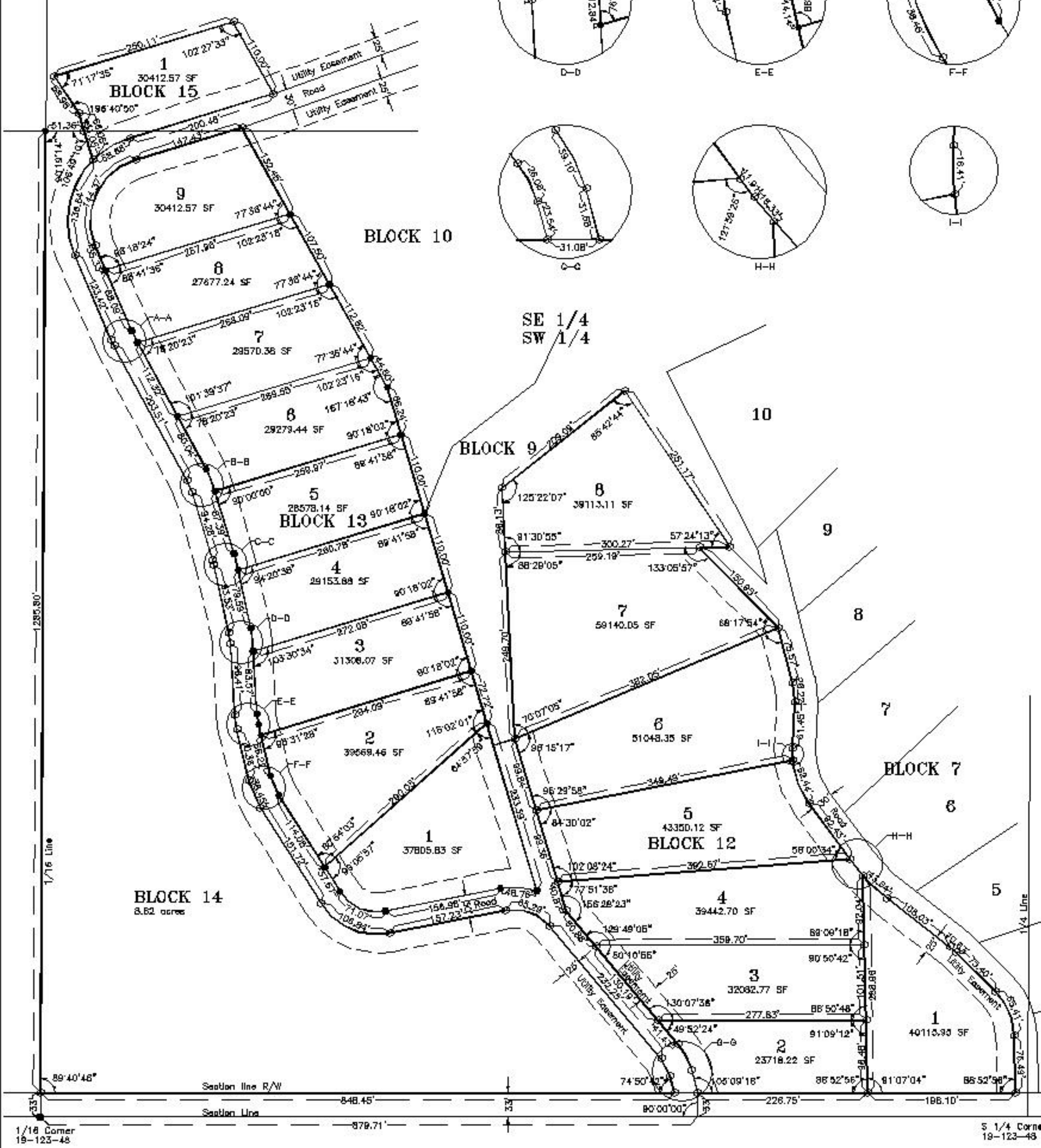
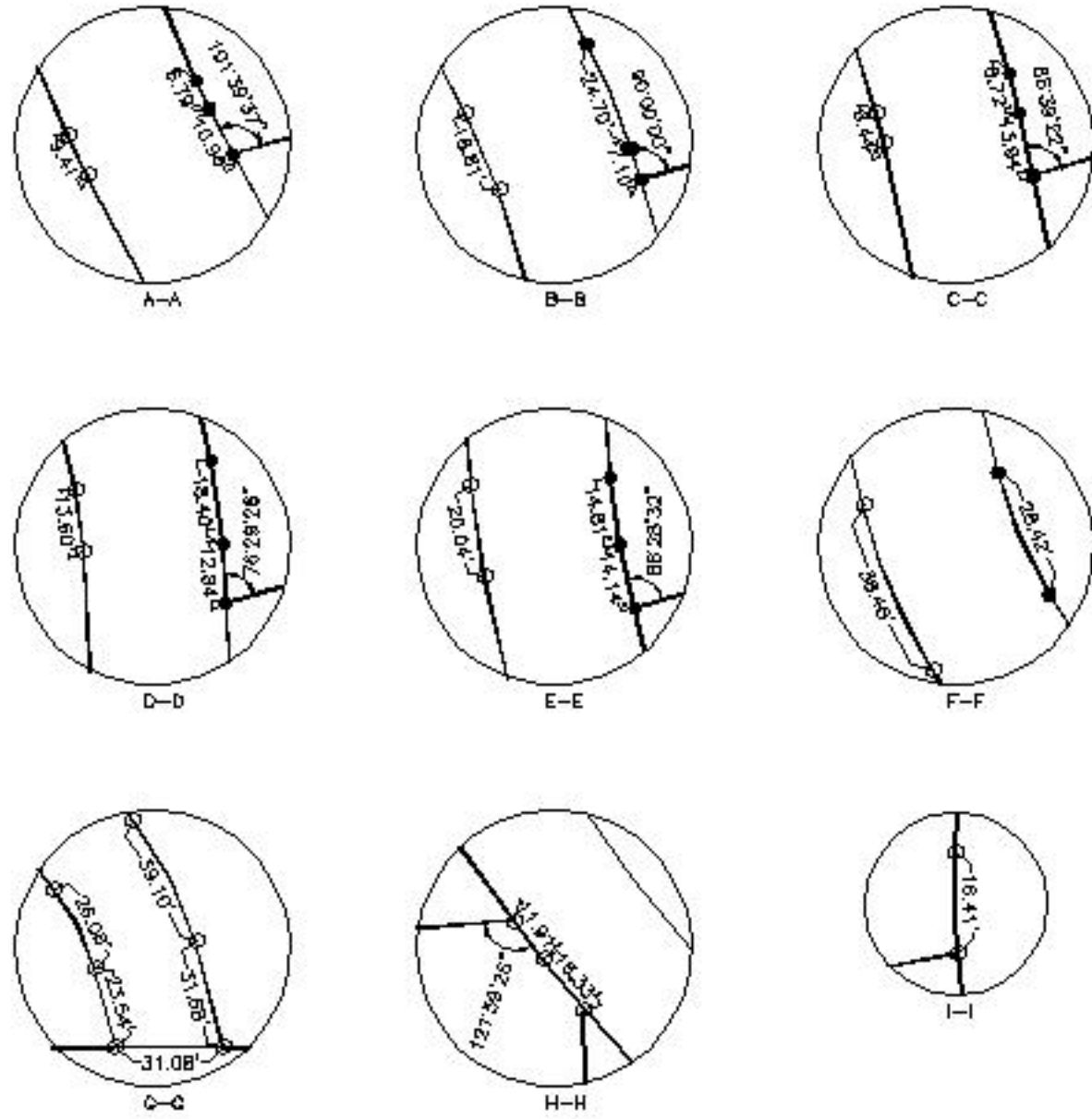
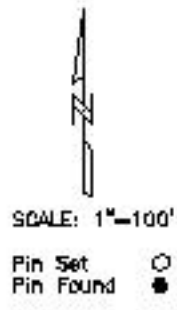
Pin Set  
 Pin Found



Surveyed and Platted by  
 Donald R. Larson  
 Registered Professional Engineer  
 and Land Surveyor No. 2439  
 March 2005

SHEET 7 OF 7

LOTS 1-8, BLOCK 12; LOTS 1-9, BLOCK 13; BLOCK 14; and  
 LOT 1, BLOCK 15, SHORES OF TIMBER RIDGE SUBDIVISION



1/16 Corner  
19-123-48

SE 1/4 Corner  
19-123-48

Surveyed and Plotted by

Donald R. Larson  
 Registered Professional Engineer  
 and Land Surveyor No. 2499

March 2005

Document Prepared by  
 Donald R. Larson  
 LARSON ENGINEERING  
 102 S. Dakota St.  
 Hibank, SD 57282  
 605-432-4088